

Short case

Short case publication... Version 2.19 | Edited by professor Yasser Metwally | June 2009



Short case

Edited by
Professor Yasser Metwally
Professor of neurology
Ain Shams university school of medicine
Cairo, Egypt

Visit my web site at:
<http://yassermetwally.com>

22 month old female patient diagnosed clinically with Assymetric Diskenetic Cerebral Palsy (right worse then left) with Hypotonia and Orofacial Dyskinesia.

DIAGNOSIS: BILATERAL HYPOXIC/ISCHEMIC BASAL GANGLIONIC NECROSIS INDUCING EXTRAPYRAMIDAL FORM OF CEREBRAL PALSY

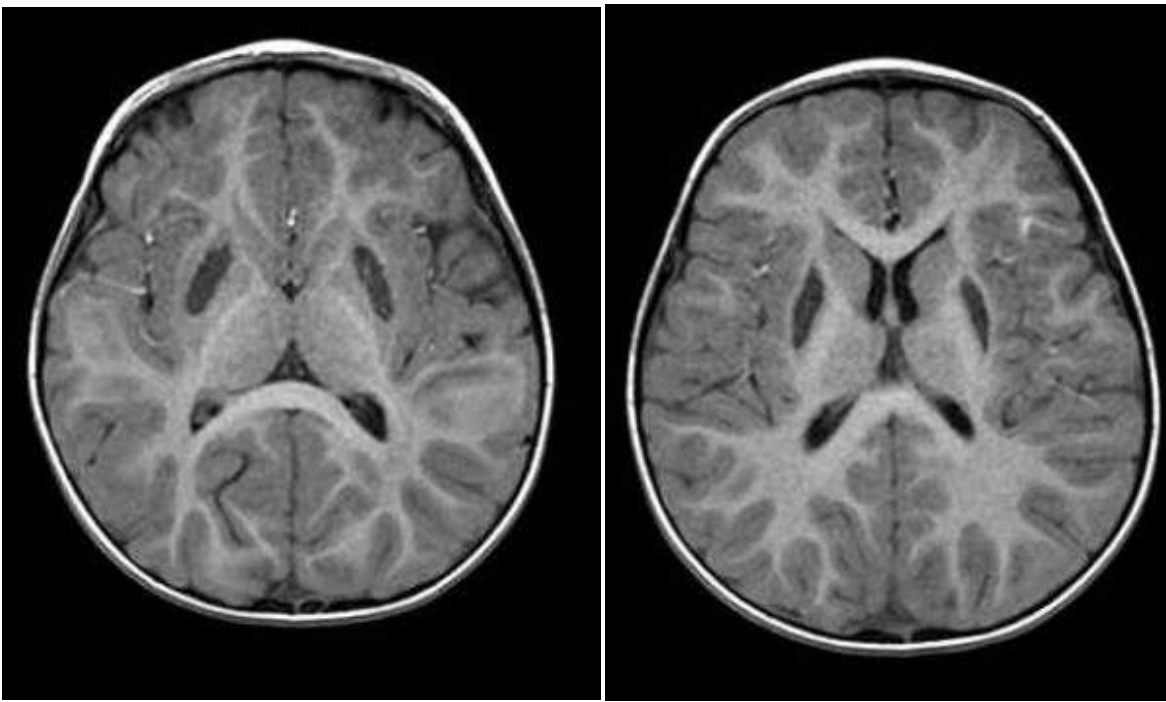


Figure 1. Precontrast MRI, T1 images (Axial view) showing bilateral fairly symmetrical, well circumscribed hypointensity involving the lateral parts of the putamen and the globus pallidus indicating cystic necrosis of these parts, most probably due to perinatal brain hypoxia/ischemia. The bilateral cysts is isointense with the CSF in the T1 images.

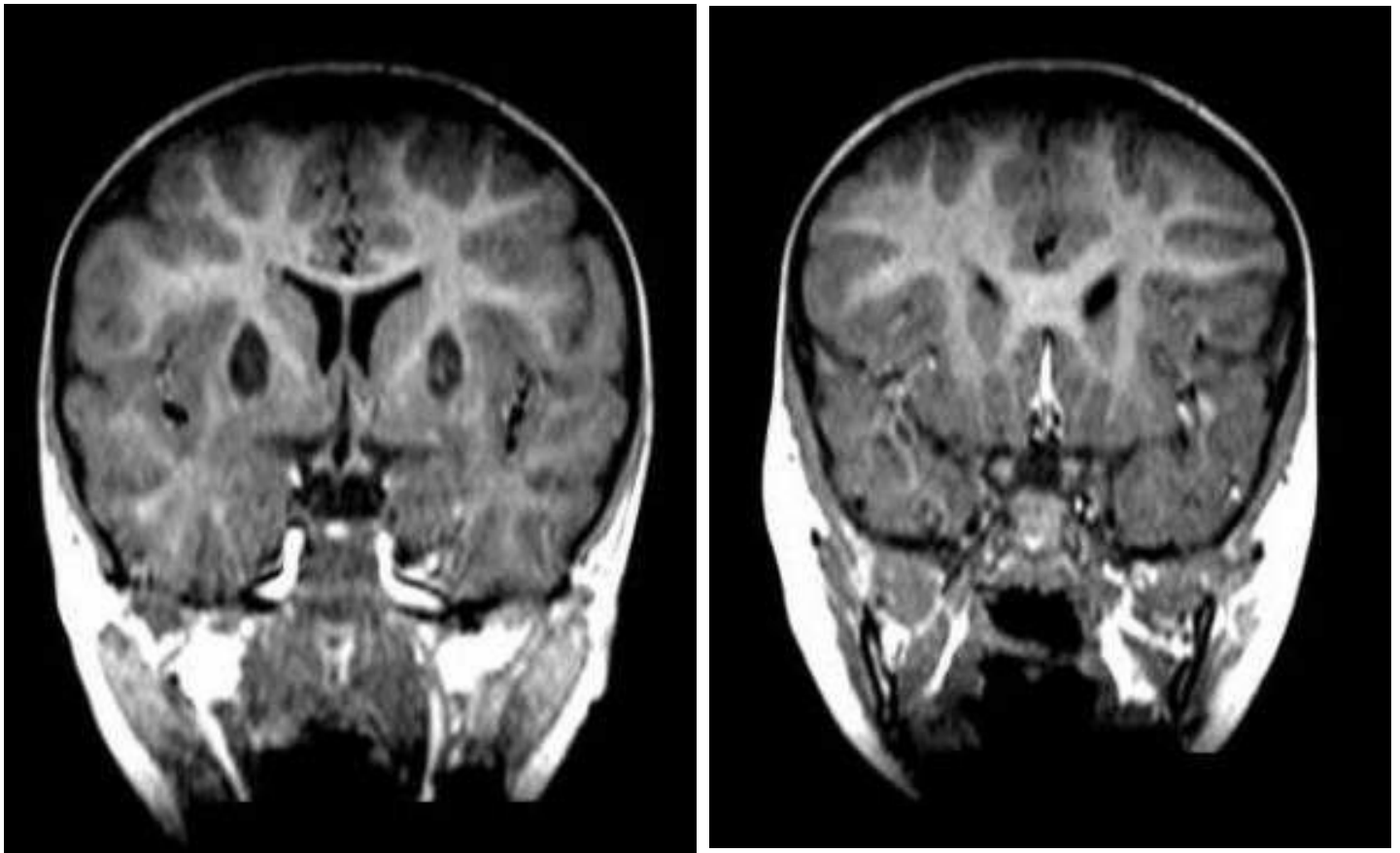


Figure 2. Precontrast MRI, T1 images (Coronal view) showing bilateral, fairly symmetrical, well circumscribed hypointensity involving the lateral parts of the putamen and the globus pallidus indicating cystic necrosis of these parts, most probably due to perinatal brain hypoxia/ischemia. The bilateral cysts is isointense with the CSF in the T1 images.

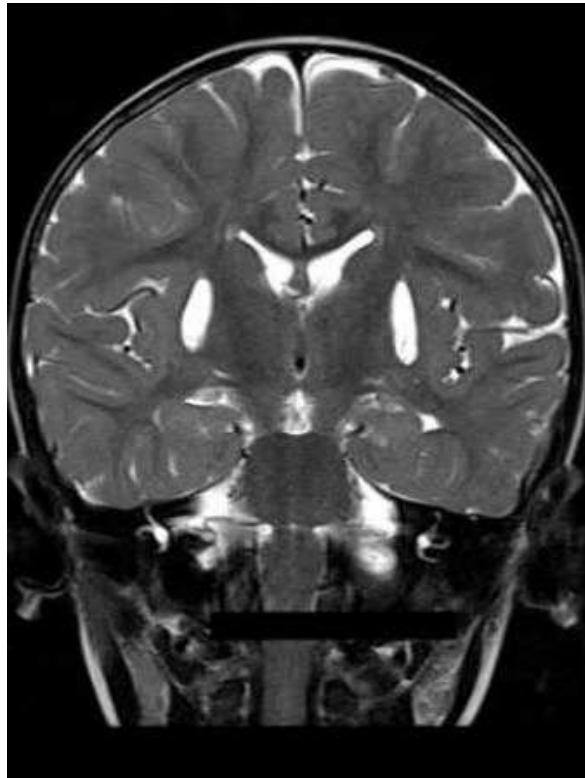
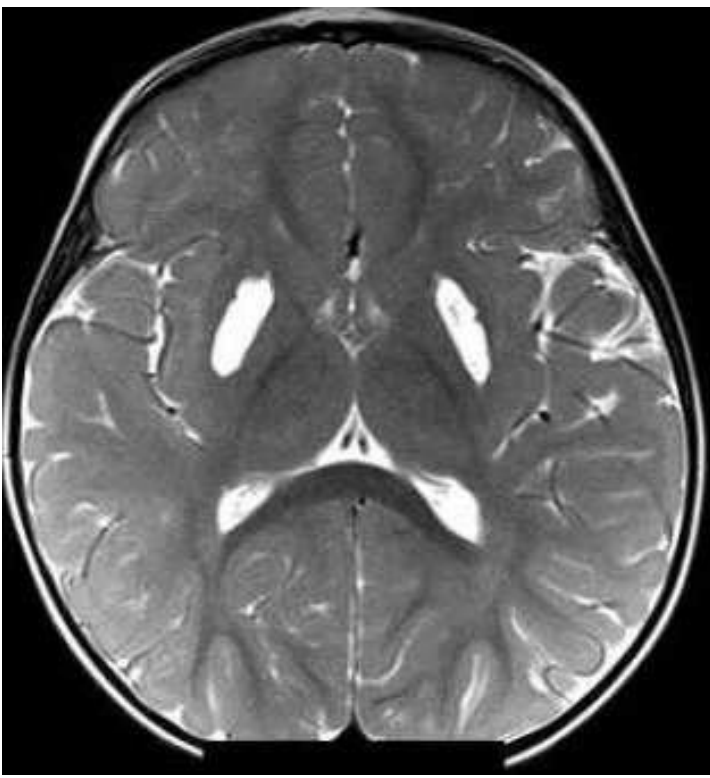


Figure 3. MRI T2 images. The bilateral basal ganglionic cystic necrosis is hyperintense and fairly symmetrical. Again the basal ganglionic cysts are isointense with the CSF

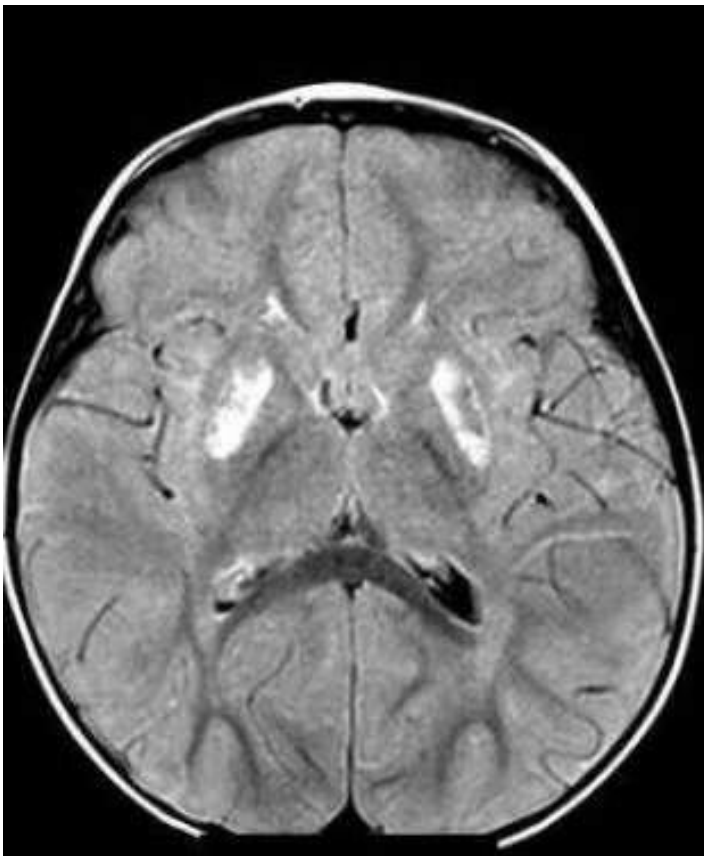


Figure 4. MRI T2 (A) and T1 (B) images images showing vertical disc herniation (Schmorl's nodule) in the upper lumbar vertebrae

References

1. Metwally, MYM: Textbook of neurimaging, A CD-ROM publication, (Metwally, MYM editor) WEB-CD agency for electronic publishing, version 10.2a April 2009

Addendum

- ◆ A new version of short case is uploaded in my web site every week (every Saturday and remains available till Friday.)
- ◆ To download the current version follow the link "<http://pdf.yassermetwally.com/short.pdf>".
- ◆ You can download the long case version of this short case during the same week from: <http://pdf.yassermetwally.com/case.pdf> or visit web site: <http://pdf.yassermetwally.com>
- ◆ To download the software version of the publication (crow.exe) follow the link: <http://neurology.yassermetwally.com/crow.zip>
- ◆ At the end of each year, all the publications are compiled on a single CD-ROM, please contact the author to know more details.
- ◆ Screen resolution is better set at 1024*768 pixel screen area for optimum display
- ◆ For an archive of the previously reported cases go to www.yassermetwally.net, then under pages in the right panel, scroll down and click on the text entry "downloadable short cases in PDF format"
- ◆ Also to view a list of the previously published case records follow the following link (<http://wordpress.com/tag/case-record/>) or click on it if it appears as a link in your PDF reader